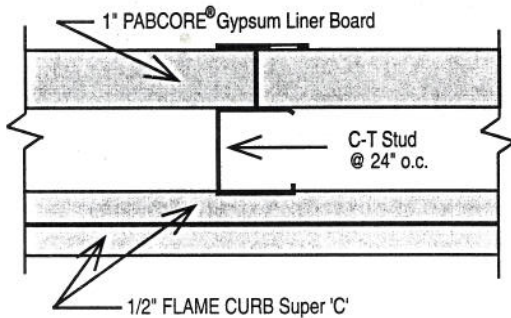


2-HOUR RATED SHAFTWALL/STAIRWELL SYSTEMS

SHAFTWALL



A 2-hour fire resistive, nonload-bearing, non-combustible partition designed to enclose shaftwalls, containing elevators, ducts, piping, air shafts and similar construction applications.

The system consists of 1" PABCORE® panels supported by 2 1/2", 4" or 6" C-T studs and faced on one side with two layers of 1/2" FLAME CURB Super 'C'.

FIRE RATING: 2 - HOUR
 UL U428

SOUND RATING: STC 50-54
 RAL - TL93-181

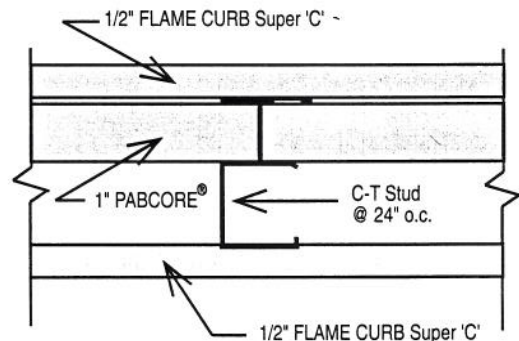
CONSTRUCTION: 1" PABCORE® Gypsum Liner Board inserted between floor and ceiling J- track with T section of C-T metal studs between PABCORE® panels. Two layers 1/2" FLAME CURB Super 'C' gypsum wallboard applied to face of C-T studs. **Base** layer applied at right angles to studs with 1" Type S screws 24" o.c. and **face** layer applied parallel to studs with 1 5/8" Type S screws 12" o.c. Face layer joints with finished side covered with tape and joint compound. **Sound tested** with 1 7/8" unfaced glass fiber in cavity.

STAIRWELL

FIRE RATING: 2 - HOUR
 UL U429

SOUND RATING: STC 45-49
 RAL - TL93-182

CONSTRUCTION: 1" PABCORE® Gypsum Liner Board inserted between floor and ceiling J- track with T section of C-T metal studs between PABCORE® panels. One layer 1/2" FLAME CURB Super 'C' gypsum wallboard applied parallel to each side of C-T studs with 1" Type S screws 12" o.c.; stagger joints each side. Finish joints both sides with tape and joint compound. **Sound tested** with 1 7/8" unfaced glass fiber in cavity.



Designed for use to enclose stairwells, this system is finished on both sides with a single layer of 1/2" FLAME CURB Super 'C'.